



**ENVIRONMENTAL
POLICY**

Studio18

Studio 18 is committed to safeguarding the environment by reducing any negative impact brought about by its operations. Studio 18 strives to instill a positive sustainability-conscious culture by providing awareness, training, as well equipping its members with relevant resources.

Studio 18 shall strive towards continuous improvement in its carbon footprint by referring to international good practices, literature, and collaborating with other entities who work towards the wellbeing of the community and natural environment. Consultation with Studio 18's Environmental Sustainability Representatives is an integral part of this process.

Through this Environmental Policy, (and most importantly by acting upon it!) Studio 18 endeavours to set an example and encourage others to follow suit.

Studio 18 shall work towards employing sustainable approaches throughout its operations, within these areas:

1. Administration

2. Learning Programmes

3. Learning, Rehearsal and Performance Spaces

4. Productions

ADMINISTRATION

Go paperless: direct debit payments, forms, info packs, etc...

Encourage remote working and virtual meetings as much as practically possible.

Encourage placing plants in the office, to improve the carbon footprint.

If printing cannot be avoided, print on 'economic' setting and refill ink cartridges.

Switch off lights and appliances when not in use.

Separate waste accordingly.



LEARNING PROGRAMMES

Strive for digitally-available reading materials.

Where feasible, design frequency of sessions to minimize trips as much as possible.

Design sessions in a way that reduces the use of single-use materials.

Where reasonable, encourage sessions to be held online.

Include sustainability as part of the learning outcomes of every programme.

Keep the three sustainability pillars (social, environmental and economic) in mind at every step of the way whilst planning and delivering the programme so as to achieve sustainability in its truest form.



LEARNING, REHEARSAL AND PERFORMANCE SPACES

Encourage carpooling and organising vans to get to and from the space, especially if rehearsals run late and no public transport is available at that time.

Assess if the venue has sound transportation links and make this information available.

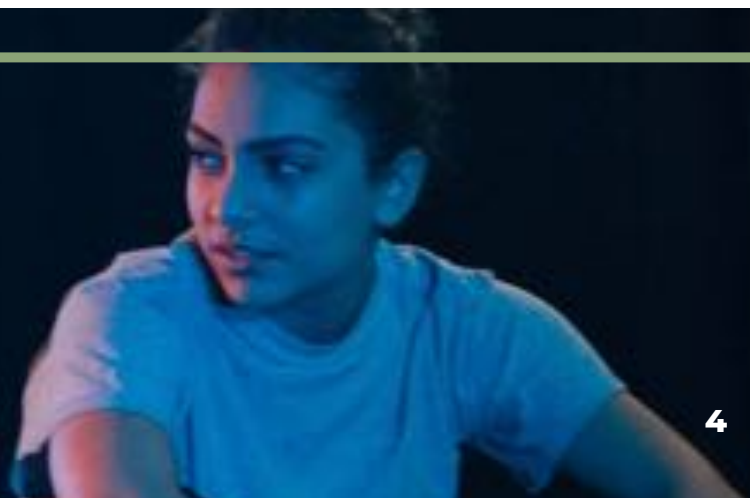
Use reusable cups, bottles and containers for food and drink.

Seek to use reusable writing materials or write on digital versions of scripts when possible. If absolutely necessary, minimise paper use and/or use draft paper.

Separate waste accordingly.

When possible, opt for a venue that uses renewable energy, LED efficient light bulbs and suitable insulation (don't be shy to ask from before!)

Ask for environmental policy/audit of the venue beforehand.



Consider creating outdoor sessions and performances, benefitting from natural light and sound, including the rehearsal process. Malta has many advantages here, with clear weather most months. Here is a list of examples of amphitheatres to start off with:

Żabbar Clement Park

Marsascula Family Park

Mosta tal-Għarusa Park





PRODUCTION - SET BUILDING

Consider reusing props and sets from previous productions by Studio 18 or other companies.

Avoid materials containing plastics and other harmful substances. Avoid using spray cans and aim to use eco-friendly paint, wood, etc.

Use materials that can be reused, repurposed or recycled after the performance.

Save any resources that were not used for future productions.

Aim to transport materials to the performance venue when traffic isn't at its worst and make as little trips with the least amount of vehicles possible - it's important to be organised with this, and somewhat Tetris master!

Use energy efficient lighting rigs and rechargeable batteries.

PRODUCTION - COSTUMES

Source costumes and accessories from vintage shops, charity shops, rental shops and other theatre companies' wardrobes.

Avoid materials that easily tear and would need to be unnecessarily replaced.

Aim to use recycled, man-made cellulose and bast fibres, rather than cotton, synthetics and animal-derived materials.

Most tips listed in relation to set-building are also applicable here.



PRODUCTION - GENERAL RECOMMENDATIONS

Create a list with environmentally friendly goals at the onset of the project, and see whether objectives have been reached by the end (post-mortem), so as to learn from any mistakes.

Prior to starting a project, set a short meeting outlining the green goals to be upheld while creating the piece with the cast and crew.

Aim to respect the ecosystem and decrease the negative environmental impact further with each and every production - always strive to improve!

Endeavour to produce shows with a net positive environmental impact and replace any necessary losses by planting trees as well as by donating some proceeds to carbon footprint reduction organisations.

Aim to include themes in the production that raise environmental awareness (e.g. Rimini Protocol).

Consider digital tickets, programmes and marketing materials.



Compiled by

Annalise Ebejer and Katya Azzopardi (Sustainability Reps for
2020/2021)

James Azzopardi Meli as Lead Auditor for ISO14001
(Environmental Management Systems)

